

如何使用电子兑换机兑换JR Pass



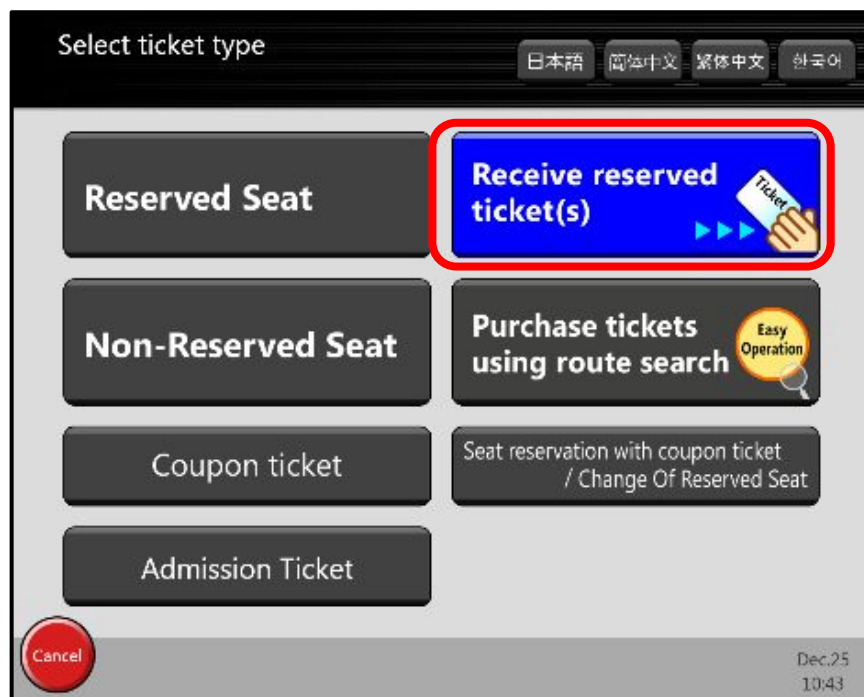
第二步：选择语言：英文、简体中文、繁体中文、韩文及日文

The screenshot shows a website interface for selecting ticket types. At the top, there is a header with the text "きっぷの種類をお選びください" (Please select the type of ticket). Below this header, a language selection menu is highlighted with a red box, containing four options: "ENGLISH", "简体中文" (Simplified Chinese), "繁体中文" (Traditional Chinese), and "한국어" (Korean). The main content area is divided into several sections:

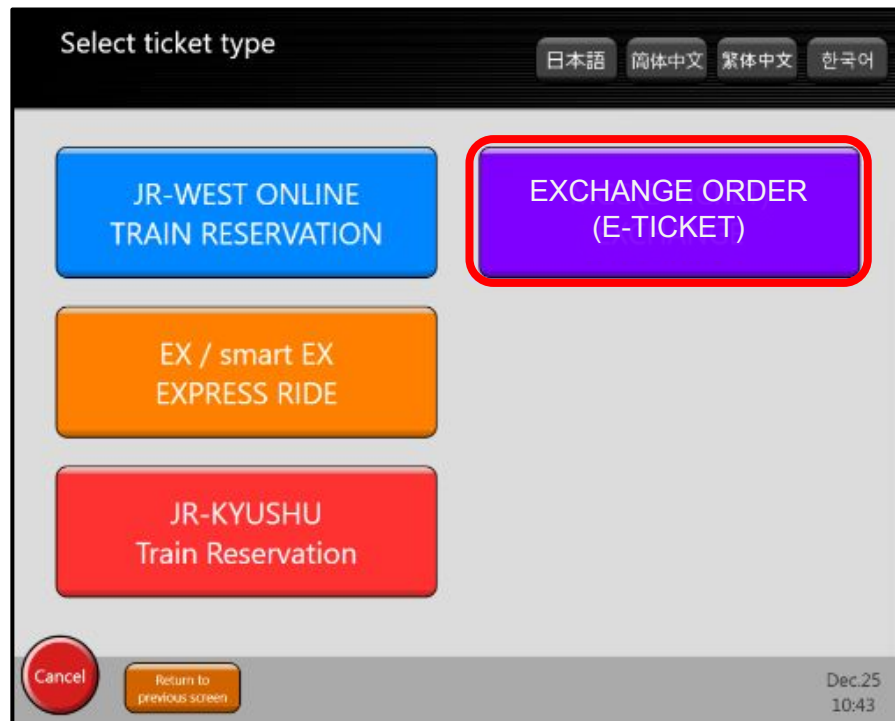
- 指定席** (Reserved Seats): Includes options for "新幹線指定席" (Shinkansen Reserved Seats) and "在来線指定席" (Main Line Reserved Seats).
- 自由席** (General Seats): Includes options for "新幹線自由席" (Shinkansen General Seats) and "在来線自由席" (Main Line General Seats).
- 予約したきっぷのお受取り** (Pickup of reserved tickets): A blue button with an icon of a hand holding a ticket.
- 時刻検索からきっぷ購入** (Purchase tickets from time search): A button with a magnifying glass icon and the text "乗換列車もラクラク検索!" (Search for transfer trains easily!).
- 回数券等で指定席予約 / 指定席の変更** (Reserve reserved seats with return tickets etc. / Change reserved seats).
- 乗車券 / 普通回数券 / 入場券** (Fare tickets / General return tickets / Admission tickets).
- 定期券** (Regular tickets): A pink button.

At the bottom center, there is a button labeled "白黒表示" (Black and white display).

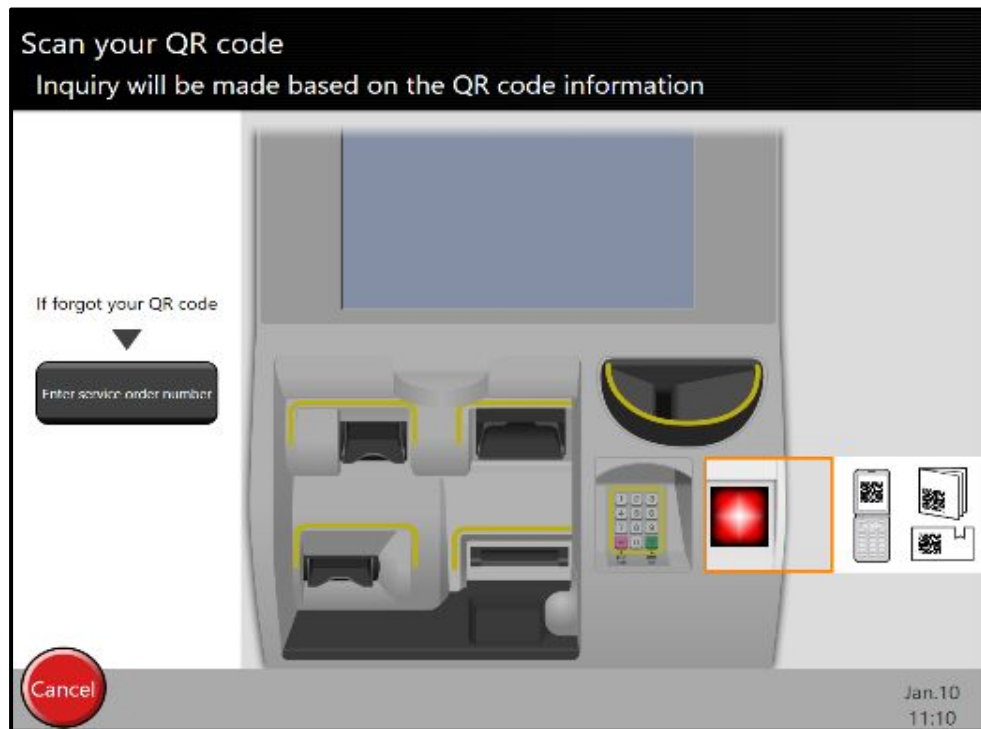
### 第三步:选择右上角兑换票券按键



#### 第四步:选择右上角兑换券(电子票)



## 第五步:扫描二维码



## 第六步:选择出行日期

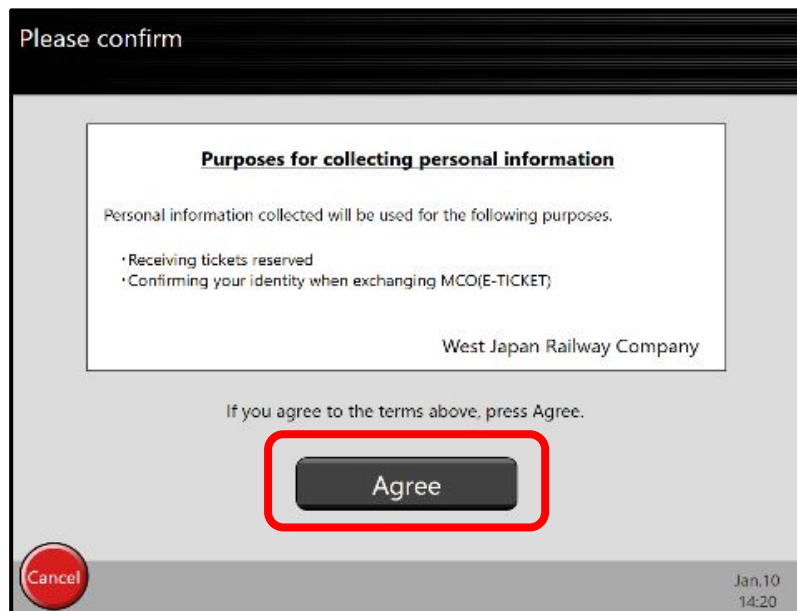
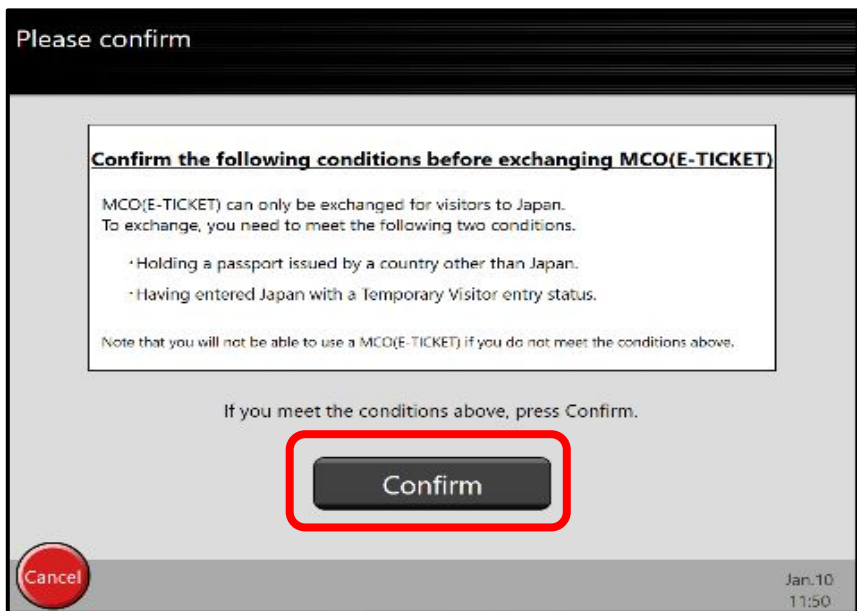
Select the start date

	Sun.	Mon.	Tues.	Wed.	Thurs.	Fri.	Sat.
Dec.						Today	26
	27	28	29	30	31		
Jan.						1	2
	3	4	5	6	7	8	9
	10	11	12	13	14	15	16
	17	18	19	20	21	22	23
	24	25					

Cancel

Nov.20  
19:12

## 第七步:确认本人符合JR Pass购买资格及允许个人信息收集



## 第八步：扫描护照，将有照片的一页面朝下

如果您的护照不含有电子芯片，请前往JR Pass票务柜台进行票券兑换




## 第九步:确认出票并完成操作

If OK, press Confirm

Service order number	MNN123456789012
Ticket type	J R - W E S T R A I L P A S S
Validity period	Dec.26 - Dec.29

Cancel

If OK 

Jan. 10  
11:23

第十步：在检票口直接使用JR Pass进站，开始在日本的旅程！

